



# L3 VDS Operator Training Class

The L3 VDS Operator Training Class teaches each student proper and effective use of the VDS product line. This interactive, self-paced course teaches the student how to properly use the various features of the L3 VDS machines. As a result of this training, each student will understand the machine's controls and be able to use the imaging options to correctly identify prohibited items. An on-screen simulation tests each student's knowledge by requiring them to interpret X-ray images from an extensive image library.

## Key Features

- Realistic simulation of machine
- Individualized, self-paced instruction
- Secure records management system
- Detailed training reports
- Flexible design

## Key Benefits

- Cost Effective - Safe and cost effective way to simulate use of the machine.
- Results Oriented - Custom simulation sessions focus on student needs to increase performance.
- Automated Remediation - Custom remedial training based on test performance.
- Efficient - Use the training anytime, anyplace and at the student's own pace.
- Reliable - Standardized training and accurate training data.
- Flexible - Modify the testing and images to meet local requirements.

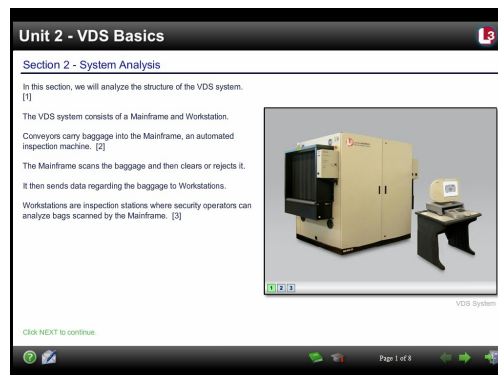
## Course Topics

**VDS Basics** – Teaches the basic structure of the VDS system and how to identify the main controls and indicator lights.

**Operating the System** – Teaches the student how to operate the VDS system. Students must demonstrate understanding of how to properly scan an item using the VDS system.

**Image Controls** – Teaches the student how the VDS system aids in the detection of dangerous and prohibited items. Students must demonstrate understanding of image modes and image enhancement features.

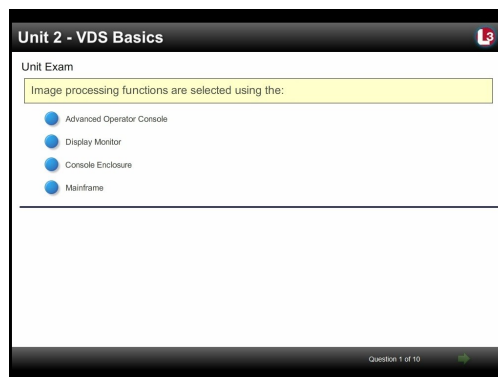
**Safety** - Teaches how to safely operate the VDS system and how to resolve basic system problems.



Operator Course Screen



Lab Exercise Screen



Unit Exam

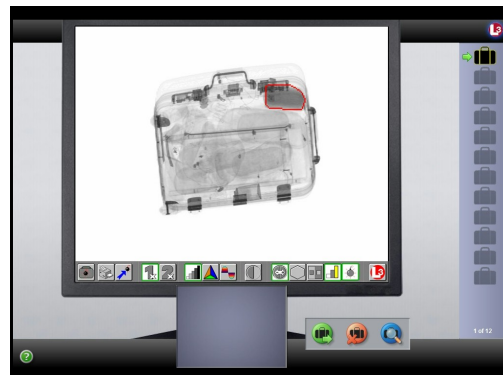


## Simulation

**X-ray Interpretation Practice** – Each student can practice their X-ray interpretation skills using an on-screen simulation of the system. The X-ray image library in the simulation contains both innocent and threat items. The industry specific image library will expose the student to a variety of threat items. The student will improve their skills by advancing through three levels of difficulty based on image complexity and orientation of the threat.

As each student works through practice sessions, a sophisticated algorithm monitors and tracks actions and decisions made for each image. Upon completion of a practice session, the algorithm determines if the student had difficulty correctly responding to any X-ray images. Based on the student's performance, subsequent practice sessions are tailored to meet the specific training needs of the student. This leads to more efficient and effective training, which results in higher detection rates and lower false alarm rates.

**Ongoing X-ray Interpretation Training** – The X-ray library contains a large number of threat items. The key to high hit rates and low false alarms rates is to have the skills to effectively recognize real threats. To do this, each student must develop knowledge of what a wide variety of threats look like under X-ray. The more different types of threats a student sees during training, the better prepared he will be to identify these threats in an operational setting. Trainers can also tailor training sessions to focus on specific threats of concern for their organization. The large image library of threats and the adaptive algorithm provide an effective way to continuously increase the detection skills of each student.



Simulation Course Screen

### Courseware Specifications

**Applications:**

Initial, Recurrent

**Delivery Options:**

CBT, ILT, WBT

**Estimated Seat Time:**

Operator Course: 2-4 Hours

Simulator Course: 5-10 Hours\*

**Image Libraries:**

HBS

**Languages:**

Arabic, English

\* Ongoing image interpretation practice is highly recommended to ensure screener proficiency.

Security Training Solutions For Today's World

[www.safe-passage.com](http://www.safe-passage.com)

[info@safe-passage.com](mailto:info@safe-passage.com)

**Corporate Headquarters**

333 Metro Park  
Rochester, New York 14623  
UNITED STATES  
Tel: +1 585 292 4910  
Fax: +1 585 292 4911

**ATS - Aviation Training & Services**

Luiz Faccini, 416 - 2º floor -  
Guarulhos - SP - Brazil  
07110-000  
Tel: +55 11 2229-8938  
Cel: +55 11 96631-6965

